

# SINGLES<sup>®</sup> RETROFIT WELDING LENSES

Upgrade your view.



**ARCONE<sup>®</sup>**



**WALTER**  
*Surface Technologies*

# ARCONE® SINGLES®

## Retrofit Welding Lenses

Upgrade your view with the SINGLES Retrofit Welding Lenses. Get a clear view of your welding thanks to HD Technology and the widest variety of single shade options in the industry. Whatever your welding needs, ArcOne can retrofit your current hood with the finest technology available.

### Features

- ▶ Unparalleled optical clarity and sensitivity reduces eye strain
- ▶ Dust and water-resistant filter
- ▶ Solar-powered means no battery changes. Ever.
- ▶ Low power solar technology does not require much power to function
- ▶ Dual shade option with the new Singles Duo lens
- ▶ Compatible with most manufacturer welding helmets



Best-in-class optical clarity and sensitivity



Low power consumption



Grind mode (Singles Duo)



HD Technology



Two shades in one (Singles Duo)



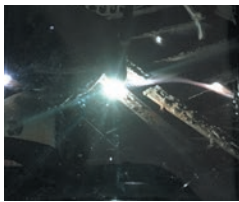
Solar-Powered



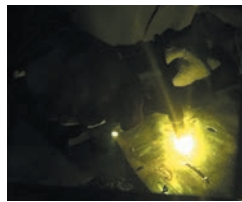
On all auto-darkening lenses

### HD Technology

See color in its truest form with ArcOne's exclusive HD technology. This innovative feature increases the range of visible light when looking through the welding lens. This means you'll see more natural colors, providing a clearer, more defined view of your work area.



**HD lens**  
ArcOne HD lens



**Non HD**  
Competitor lens

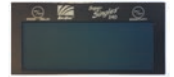
### FOR MORE INFORMATION, TO SCHEDULE A FREE DEMO OR TO ORDER:

#### United States:

Phone: (800) 522-0321 | Fax (866) 274-4435  
Email: OrderDesk.US@walter.com

#### Canada:

Phone: (888) 592-5837 | Fax (866) 581-1121  
Email: csr@walter.com



|   | Singles                         | Singles Duo  | Super Singles |
|---|---------------------------------|--------------|---------------|
| <b>Cartridge Size</b>                   | 2 x 4.25 in, 5 x 4 in, 4 x 5 in | 2 x 4.25 in  | 2 x 4.25 in   |
| <b>Viewing Area</b>                     | 5.25 sq. in.                    | 5.25 sq. in. | 5.25 sq. in.  |
| <b>HD Technology</b>                    | ✓                               | ✓            | ✓             |
| <b>Light Shade</b>                      | 2.5                             | 2.5          | 2.5           |
| <b>Dark Shade</b>                       | 8-9-10-11-12                    | 10-11/11-12  | 10.5          |
| <b>Variable Sensitivity</b>             |                                 |              | ✓             |
| <b>On/Off Delay</b>                     |                                 |              | ✓             |
| <b>Grind Mode</b>                       |                                 | ✓            | ✓             |
| <b>TIG Rating</b>                       | 50 amps                         | 50 amps      | 25 amps       |
| <b>Arc Sensors</b>                      | 2                               | 2            | 2             |
| <b>Solar-Powered</b>                    | ✓                               | ✓            | ✓             |
| <b>Outside &amp; Inside Cover Plate</b> | 03-0P                           | 03-0P        | 03-0P         |

#### Singles 2 x 4 lenses

| Part Number | Shade |
|-------------|-------|
| S240-8      | 8     |
| S240-9      | 9     |
| S240-10     | 10    |
| S240-11     | 11    |
| S240-12     | 12    |

#### Singles Duo

| Part Number | Shade |
|-------------|-------|
| S240-10/11  | 10/11 |
| S240-11/12  | 11/12 |

#### Super Singles

| Part Number | Shade |
|-------------|-------|
| SS240       | 10.5  |

\*Ask your Walter Territory Manager for a full list of SKUs in other formats.

Available at:

Walter Surface Technologies Inc. © 2020 All Rights Reserved. Walter Surface Technologies and Bio-Circle logos are trademarks or registered trademarks of Walter Surface Technologies Inc. Other company, product or service names may be trademarks or service marks of Walter Surface Technologies or others. 98-H 356 (12-21)