



Canadian Pacific Railway

Industry
Transportation

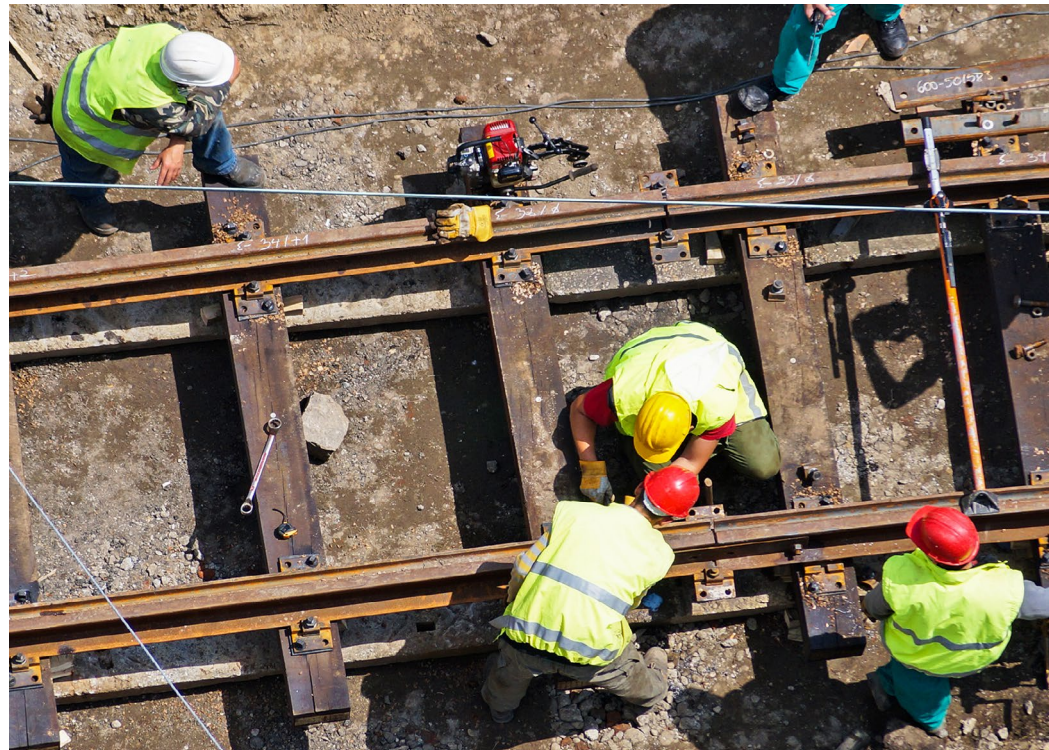
Company
13,000 employees

Profile
Transcontinental railway group provides logistics, supply chain and intermodal transportation services across a 13,700-mile rail network in Canada and the US.

Business objectives
Replace legacy grinding and cutting devices with state-of-the-art equipment and safety features for railway workers. Eliminate workplace injury risks using company-wide safety training programs.

Approach and solution
Implement Walter safety training seminars. Deploy approved corded and cordless grinders, Walter Combo Zip™ and Zip ALU™ cutting wheels as safer, versatile and more effective tools than current job site equipment.

Enhancing employee safety without sacrificing productivity: Reduce workplace injuries by using comprehensive safety programs and industry-leading equipment



Moving millions of carloads of freight across North America requires vigilant maintenance of all equipment and rail infrastructure, which takes a staunch commitment to safety.

Just ask Peter Shaw, a Work Equipment Specialist at CP. This 28-year railway veteran is one of 13,000 CP employees hard at work keeping 51,000 railway cars moving safely across the logistics and supply chain group's 13,700-mile rail network.

“Walter tools are great. And the fact that they come to our workplace to train us for free is a real bonus for CP!”

— Peter Shaw,
CP Work Equipment Specialist

Moving these increasingly high volumes of freight requires constant maintenance of CP's rolling stock, work equipment and sophisticated rail infrastructure. It goes without saying that effective tools and safe work practices are a vital part of the equation.

Yet for six months, CP work equipment staffers found themselves deeply challenged after CP Rail implemented an indefinite ban on grinders used to perform cutting and thin-blade tasks.

CP's safety directive came in the wake of two employee injuries resulting from use of power tools during maintenance operations.

"We had a couple of incidents in the field leading to the ban," recalls Shaw. A complete review of work methods and tools was necessary and completed by CP.

Metalwork projects

CP's technicians need their power tools, especially for high-volume sheet metal work, grinding, rail maintenance and scores of other metalwork projects. On any given day, CP workers are cutting hoods off locomotives, fitting shields to signaling equipment and dealing with mechanical issues to keep the vast railway up and running.

CP's shops use grinders and cutting tools every day. Mechanics have them in their trucks and use them for railway breakdowns. In fact, about 70% of CP grinders are in daily use.

"We immediately offered free safety seminars on the proper use of all products associated with grinding and cutting. In the end, we satisfied all CP stakeholders."

— Bill Hunter,
Territory Manager, Walter Surface Technologies

As the moratorium played out, CP considered its equipment options. While reviewing their safety policy, the rail group turned to less efficient alternatives.

A cost-effective solution? "Not at all," Shaw says. "And sometimes these alternates were more challenging in use than cut-off wheels. We had complaints from the field. It was causing us all sorts of problems and delaying our work."

Superior training and equipment

Walter Surface Technologies' Bill Hunter and Daimon Mussell approached CP with a two-pronged solution: better equipment bolstered by a comprehensive safety training program for CP's machinery and metalworkers. "CP was made aware there were better and safer tools available," Mussell says. "But our safety training was the tipping point. We walked CP through our products, their world-class safety features and our safety training program. It made total sense."

It all began at CP's Calgary shops where Hunter demonstrated Walter's versatile Combo Zip™ cutting wheel on a hardened steel pin that CP had chosen as a demanding test application. "It cut the pin beautifully," Hunter recalls. "Then I flipped the grinder over into a grinding position and deburred the pin." Solution delivered: efficiently, safely and with versatility. "The CP workers were very happy."

Ultimately, CP approved the use of 4.5-inch, 5-inch and 6-inch Walter grinders – each equipped with double action paddle switches to safely stop the devices when not held by users, and gear drive-integrated safety clutches to control torque and eliminate dangerous backlash.

After a six-month review and recognizing a need in the field, CP also approved Walter's Combo Zip™ cutting wheels and its fast and free-cutting Zip ALU™ wheels for non-ferrous metals.

Shaw recalls being pleased when CP's engineering executives signed off on these new solutions provided by Walter. At one point, a video showing less effective tools being used at CP became instrumental



in improving previous processes. By that stage, Shaw says CP realized it was as much a safety as an efficiency issue. "This is what was happening in the field. We had to rethink this."

That precipitated CP's approvals as Walter's equipment performance and safety features were hugely attractive, Shaw says, yet training and safety seminars helped tip the scales. "We wanted to stress both the benefits of training and safety features of the tools," he says.

"Our training initiative at CP has been an exciting and rewarding challenge," explains Mussell. "CP has crews on the road, on railways and in remote areas. So far we've trained over 1,000 CP workers at 80 locations across the country."

"We take a consistent approach to offering free safety awareness programs across North America. That's our strength – communicating a single message of safety to all our customers."

— Daimon Mussell,
Vice President, Sales, Walter Surface Technologies

"Our people have fanned out Canada-wide and into the US," adds Hunter, who leads safety seminars as early as 5:45 am.

Today, CP's longstanding relationship with Walter is stronger than ever, which Shaw chalks up to Walter's commitment to rigorous safety equipment handling programs and top-notch customer service.

"The efforts put forward by Walter Surface Technologies allowed us to reintroduce a line of safe and effective grinding and cutting tools," Shaw says. "This enabled our shops and crews to return to more productive operations."



SAFETY FIRST

According to the Association of Workers' Compensation Boards of Canada, Canadian transportation sector workers made 15,538 workplace injury claims in 2015, down from just over 17,000 in 2014.

Walter Surface Technologies' Bill Hunter and Daimon Mussell want to help lower that figure even further with Walter's free safety seminars.

"We're constantly delivering a message of safety to our customers," says Mussell. "Every day we try to create safer work environments through better products and training."

"A 10,000 RPM grinding wheel turns at about 125 mph," Hunter explains. That's serious power. Which is why Walter is focused so intently on first-class equipment safety training at CP.

In delivering seminars to show proper use of grinders, cutting wheels, wire brushes – all products and applications associated with CP's metalworking jobs – Walter's leaving no safety stone unturned.

"Our approach with CP isn't just about products," Hunter says. "It's about Walter training sessions to make CP workplaces safer. And there's a huge variety of applications within CP."



Why CP chose Walter's powerful Mini PS™ grinder

- Non-locking paddle switch for maximum safety
- Safety clutch and tool-free rotating guard
- Small yet powerful for job site versatility

Why CP chose Walter's Super 5 PS™ grinder

- Non-locking paddle switch for maximum safety
- Safety clutch, power guard and tool-free rotating guard
- Versatility: grind, cut, sand, finish and clean at high speed

Why CP chose Walter's Big 6 PS™ grinder

- Non-locking paddle switch and brake for maximum safety
- Safety clutch, power guard and tool-free rotating guard
- Versatility: grind, cut, sand, finish and clean at high speed
- Ergonomic stabilizer design for minimum vibration

Why CP chose Walter's cordless ZipCutter™

- One of the most powerful cutters on the market
- Electronic clutch eliminates wheel spin in event of jams
- Accommodate up to 6" cutting wheels

Why CP chose Walter's versatile Combo Zip™ wheel

- Combined cutting and deburring capability
- Reduced wheel changeover enhances productivity
- Fast, safe cutting and guaranteed long wheel life
- Metal hub cladding for strength, control and safety
- Reinforced like a grinding wheel for optimized operator safety

Why CP chose the fast and free-cutting Zip ALU™ wheel

- Best wheel-life design
- Quick cuts on aluminum and non-ferrous alloys
- Superior abrasive for smooth and cool cuts
- Guaranteed not to clog and optimizes safety



Walter Surface Technologies
5977 Trans-Canada Highway W.
Pointe-Claire, QC H9R 1C1

Tel.: 514-630-2801
Toll free: 1-800-363-7368
Fax: 514-630-2825
Email: info@walter.com

Walter Surface Technologies USA
810 Day Hill Road
Windsor, CT 06095

Tel.: 1-860-298-1100
Toll free: 1-866-592-5837
Fax: 1-860-298-1112
Email: info.us@walter.com

Walter Surface Technologies Mexico
Monterrey, Nuevo León
Privada La Puerta 2879, Bodega 15
Colonia Parque Industrial la Puerta
Santa Catarina N.L., C.P. 66367

Tel.: (81) 1930-2233
Email: walterconnect@walter.com

Walter Surface Technologies Brazil
São Paulo
Rua Marco Giannini, 426
Jd. Gilda Maria, CEP. 05550-000

Tel.: (11) 3783-9500
Fax: (11) 3783-9501
Email: atendimento@walter.com



Walter Surface Technologies Inc. ©2017. All Rights Reserved.
Walter Surface Technologies and Bio-Circle logos are trademarks
or registered trademarks of Walter Surface Technologies Inc. Other
company, product or service names may be trademarks or service
marks of Walter Surface Technologies or others.

Learn more at walter.com